

# NEWSLETTER

August, 2017



## Applying Landscape and Sustainable Land Management (L-SLM) for mitigating land degradation and contributing to poverty reduction in rural areas

The Project **“Applying Landscape and Sustainable Land Management (L-SLM) for mitigating land degradation and contributing to poverty reduction in rural areas”** is 3 years project (2016-2019) initiated by the Ministry of Environment and Natural Resources Protection (MoENRP) of Georgia. The project is financed by GEF, implemented through UNEP and the executing by MoENRP through REC Caucasus.

Project objective is to support integration of good Landscape and Sustainable Land Management (L-SLM) principles and practices into national policy and institutional framework to ensure adoption of economically viable practices by rural communities.

LEPL Environmental Information and Education Centre is implementing the third component of the Project - **“National Capacity Development and Knowledge Management”**. During the first year (2016-2017), the following activities were undertaken within the mentioned third component:



### Inception workshop with the participation of stakeholders

On September 7, 2016, the [inception workshop](#) was held within the project “Applying Landscape and Sustainable Land Management (L-SLM) for mitigating land degradation and contributing to poverty reduction in rural areas” in order to consult with stakeholders, introduce the expected outcomes and discuss further steps in details. Throughout the meeting, the representatives of various local and international, governmental as well as non-governmental and academic sectors/fields, were given the opportunity to get to know and actively involve in the discussion process regarding the objectives, planned activities and future outcomes of all three components.



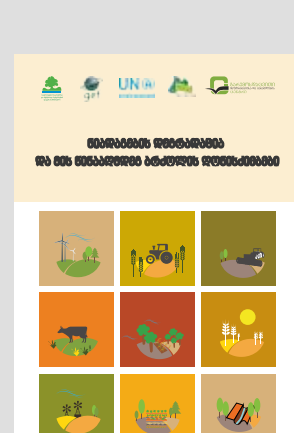
### Needs assessment on the local level involving decision makers and farmers

In the beginning of 2017, LEPL Environmental Information and Education Centre conducted the needs assessment workshops in four municipalities identified through the project: [Akhmeta](#), [Sighnaghi](#), [Dedoplistskaro](#) and [Gardabani](#). Within the process of discussions, the actual existing problems were identified for each municipality in the fields of soil protection, pasture, and windbreak management, while using predefined questionnaires.



### The training module concerning soil protection, windbreak and pastureland management

In accordance with the needs identified, LEPL Environmental Information and Education Centre developed the [training module](#) involving the major approaches/issues within the sphere of land and landscape sustainable management, such as soil protection, windbreak and pastureland management. According to the upper mentioned training module, the training was developed for the decision makers and farmers on the local level.



### Educational booklet - Soil Degradation Causes and Solutions

Within LEPL Environmental Information and Education Centre the [educational booklet](#) - “Soil Degradation Causes and Solutions” was developed reflecting the problems occurring in soil degradation, as well as the efficient approaches of solving them and the sustainable management measures used. The booklet was disseminated throughout the target municipalities in order to raise awareness of local communities.



### Training “Applying Landscape and Sustainable Land Management” in Akhmeta Municipality

The training “Applying Landscape and Sustainable Land Management” was held for the representatives of local self-government and farmers in [Akhmeta Municipality](#). Organized by LEPL Environmental Information and Education Centre, this training aimed to raise awareness in decision makers, local farmers and other relevant stakeholders. Within the trainings, participants were introduced to the actual challenges occurring in the field of soil and landscape degradation and the modern and efficient approaches as well as measures of sustainable management. Parallel to the theoretical component, the trainings also incorporated the field works as the part of the practical study.



### Training “Applying Landscape and Sustainable Land Management” in Sighnaghi Municipality

The training “Applying Landscape and Sustainable Land Management” was held for the representatives of local self-government and farmers in [Sighnaghi Municipality](#). Organized by LEPL Environmental Information and Education Centre, this training aimed to raise awareness in decision makers, local farmers and other relevant stakeholders. Within the trainings, participants were introduced to the actual challenges occurring in the field of soil and landscape degradation and the modern and efficient approaches as well as measures of sustainable management. Parallel to the theoretical component, the trainings also incorporated the field works as the part of the practical study.



### Training “Applying Landscape and Sustainable Land Management” in Dedoplistskaro Municipality

The training “Applying Landscape and Sustainable Land Management” was held for the representatives of local self-government and farmers in [Dedoplistskaro Municipality](#). Organized by LEPL Environmental Information and Education Centre, this training aimed to raise awareness in decision makers, local farmers and other relevant stakeholders. Within the trainings, participants were introduced to the actual challenges occurring in the field of soil and landscape degradation and the modern and efficient approaches as well as measures of sustainable management. Parallel to the theoretical component, the trainings also incorporated the field works as the part of the practical study.



### Training “Applying Landscape and Sustainable Land Management” in Gardabani Municipality

The training “Applying Landscape and Sustainable Land Management” was held for the representatives of local self-government and farmers in [Gardabani Municipality](#). Organized by LEPL Environmental Information and Education Centre, this training aimed to raise awareness in decision makers, local farmers and other relevant stakeholders. Within the trainings, participants were introduced to the actual challenges occurring in the field of soil and landscape degradation and the modern and efficient approaches as well as measures of sustainable management. Parallel to the theoretical component, the trainings also incorporated the field works as the part of the practical study.



### The cooperation memorandum with the Public College “Aisi”

In order to ensure the aspect of sustainability throughout the project component, the signing of memorandums was planned from various educational institutions in order to share the knowledge gained within the project and ensure the perspective of future cooperation. The pioneer was the [Public college “Aisi”](#), located in the village of Kachreti, where in parallel to the memorandums process, the training was conducted and the training module was shared with students and college representatives.



### The workshop/seminar with decision makers on the national level

After the successful completion of trainings in the regions, LEPL Environmental Information and Education Centre organized the [workshop/seminar](#) for the decision makers on the national level representing the fields of economy, agriculture, and environmental protection. Within the meeting, participants were introduced to the activities fulfilled, shared the views and experience, made the comments regarding the project and agreed on the joint cooperation within future steps.